

一般 板層 鑽孔圖 鏡頭 進階

指定輸出文件中使用的單位和格式
這裡控制單位和小數點前後的數字。

單位

英吋 (I)

毫米 (M)

格式

2:3

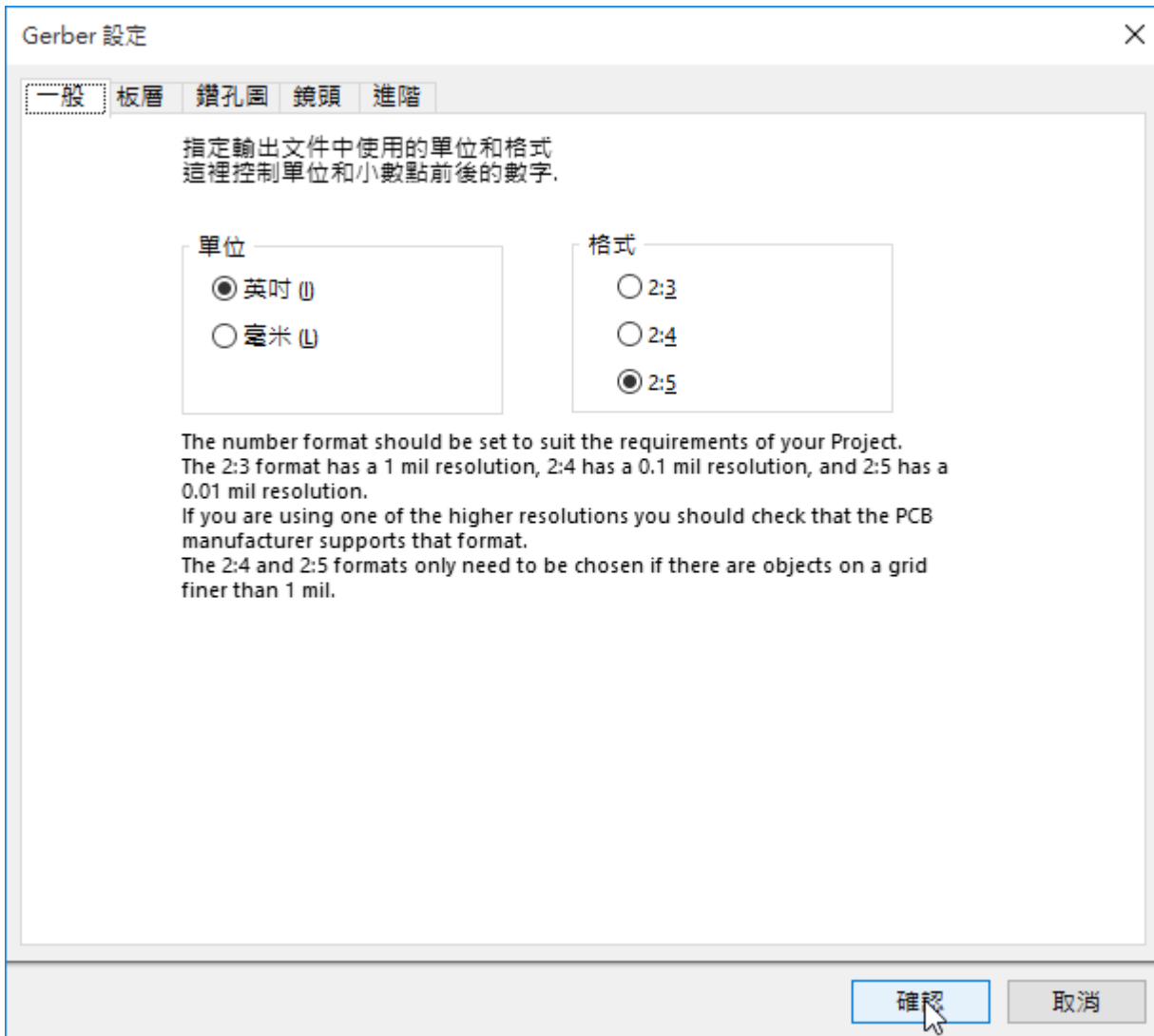
2:4

2:5

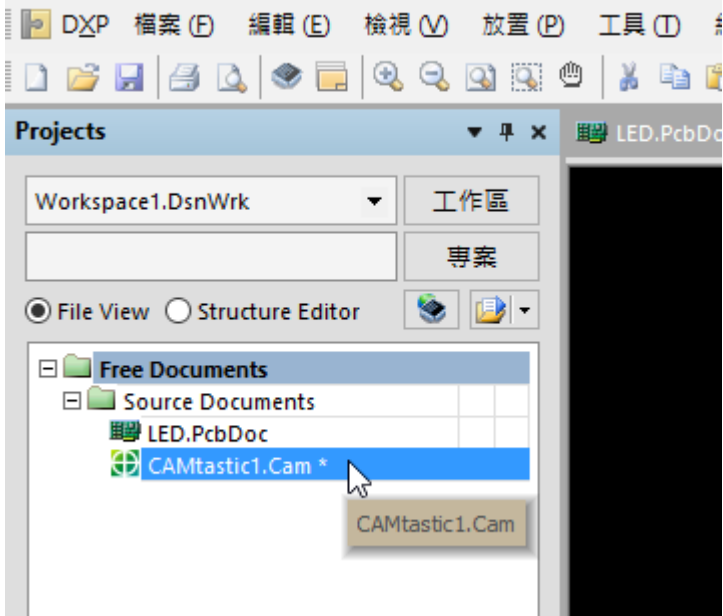
The number format should be set to suit the requirements of your Project.
The 2:3 format has a 1 mil resolution, 2:4 has a 0.1 mil resolution, and 2:5 has a 0.01 mil resolution.
If you are using one of the higher resolutions you should check that the PCB manufacturer supports that format.
The 2:4 and 2:5 formats only need to be chosen if there are objects on a grid finer than 1 mil.

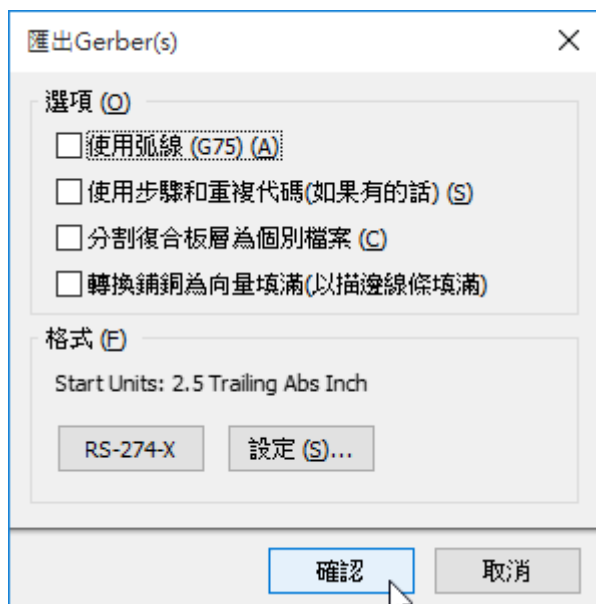
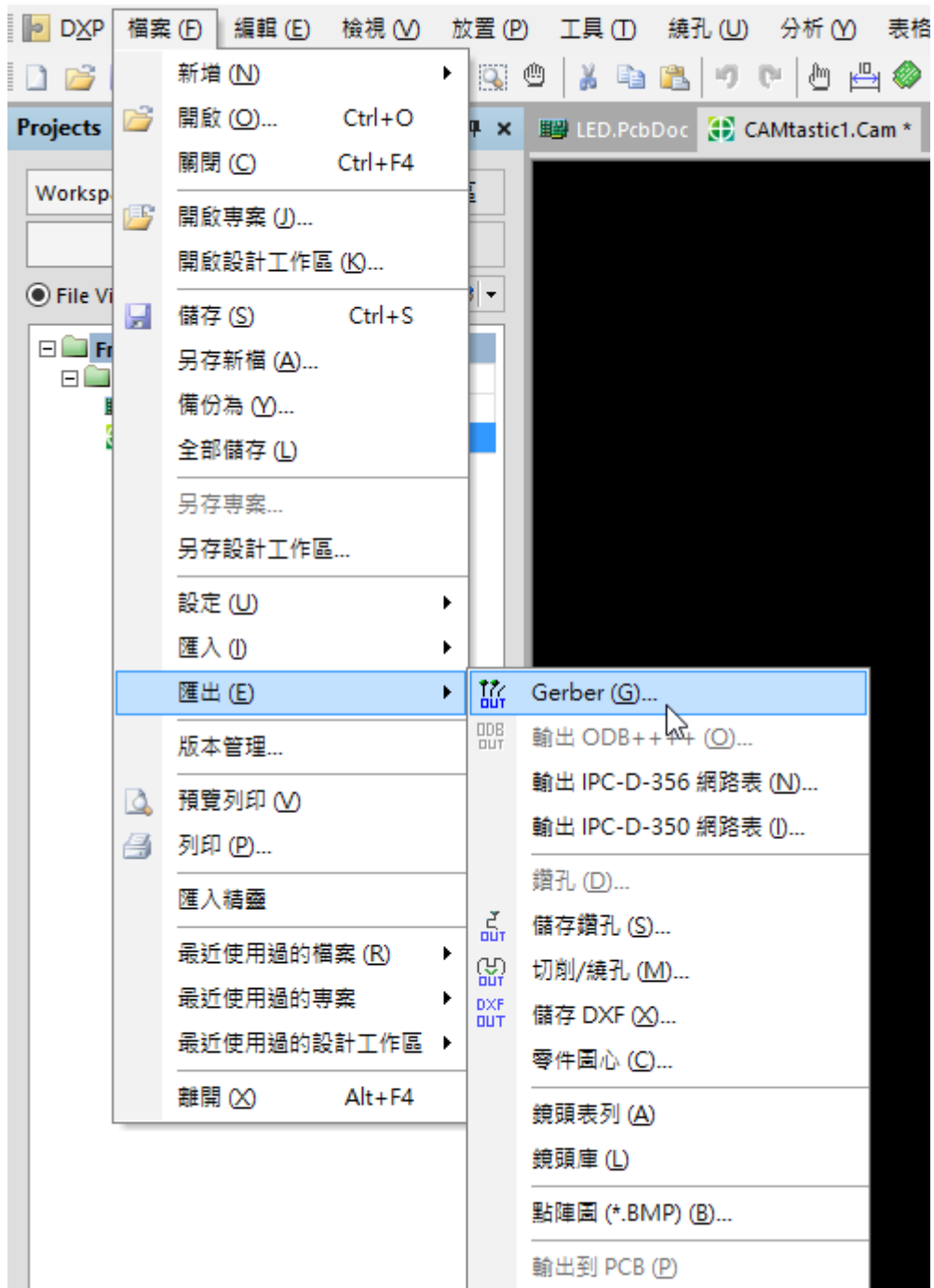
確認

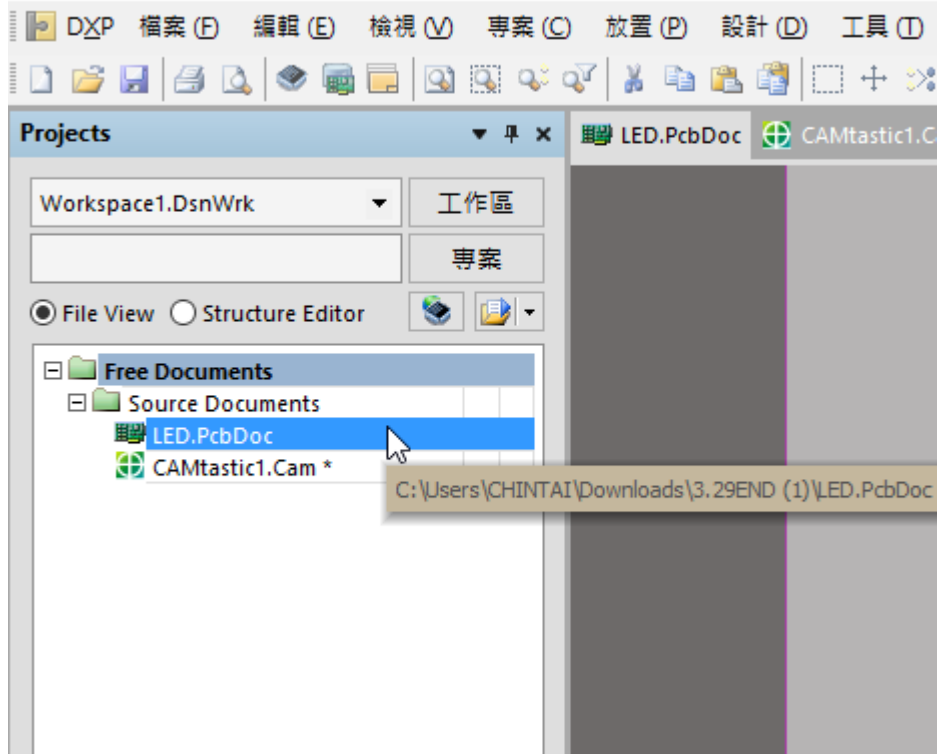
取消

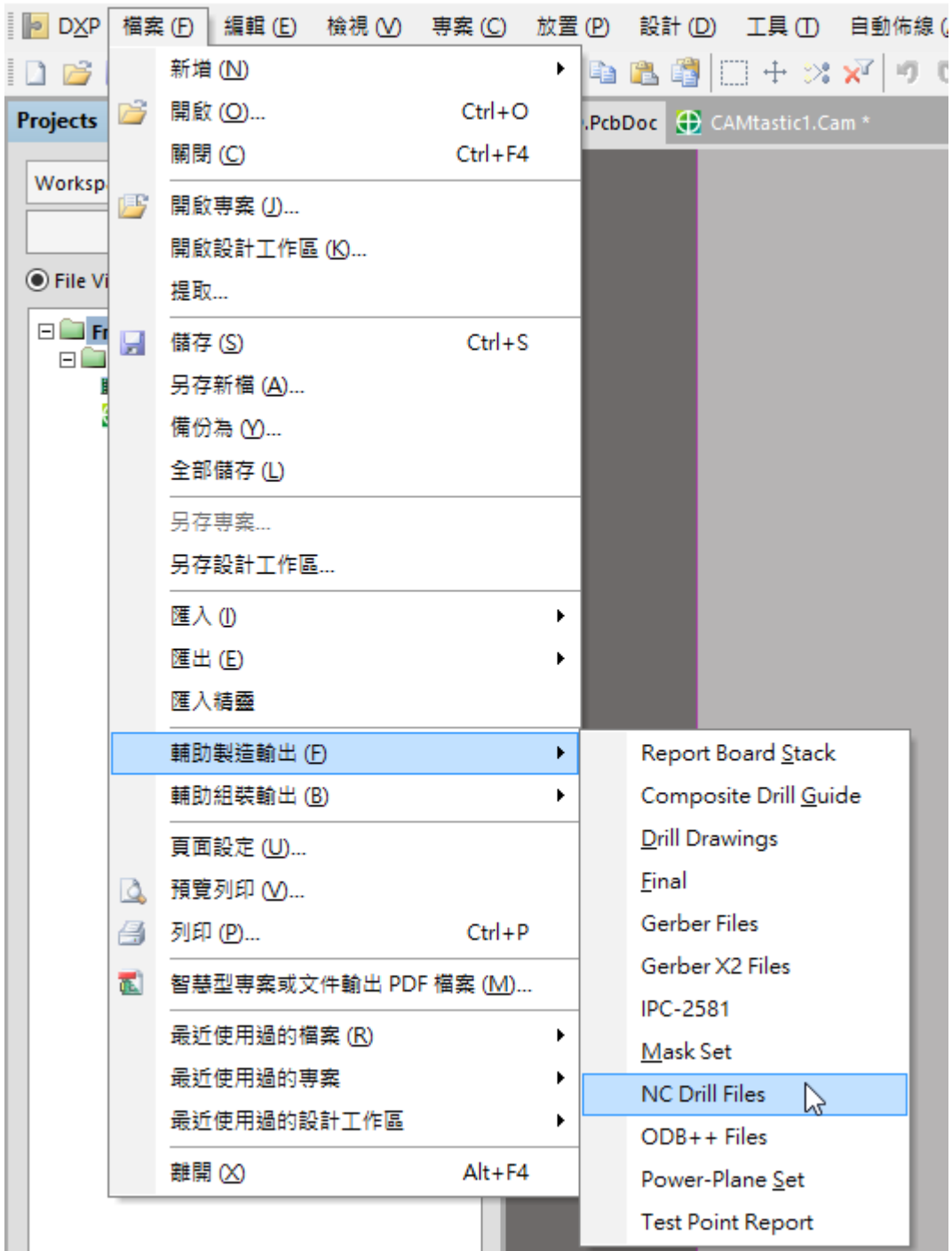


Altium Designer (15.1) - CAMtastic1.Cam * - Free Documents









NC 鑽孔設定



選項

NC 鑽孔格式

指定鑽孔輸出文件的單位和格式
這是控制單位(英制或公制)，和在小數點前和小數點後的數字的位數。

單位

- 英制 (I)
 公制 (M)

格式

- 2:3
 2:4
 2:5

The number format should be set to suit the requirements of your design. The 2:3 format has a 1 mil resolution, 2:4 has a 0.1 mil resolution, and 2:5 has a 0.01 mil resolution. If you are using one of the higher resolutions you should check that the PCB manufacturer supports that format. The 2:4 and 2:5 formats only need to be chosen if there are holes on a grid finer than 1 mil.

數字格式

- 前後都補零 (K)
 前不補零 (L)
 後不補零 (D)

座標位置

- 絕對座標原點 (A)
 相對座標原點 (V)

其它

- 最佳化改變位置命令 (O)
 將孔壁有/無電鍍的鑽孔分成兩個檔案 (G)
 使用鑽槽孔命令(G85) (U)
 產生板邊繞行路徑 (R)
繞孔工具直徑
 Generate EIA Binary Drill File (.DRL)

確認

取消

匯入鑽孔資料



設定

Start Units: 2.5 Leading Abs Inch

單位 (U)...

形狀/預置孔徑

工具表 (T)...

確認

取消

